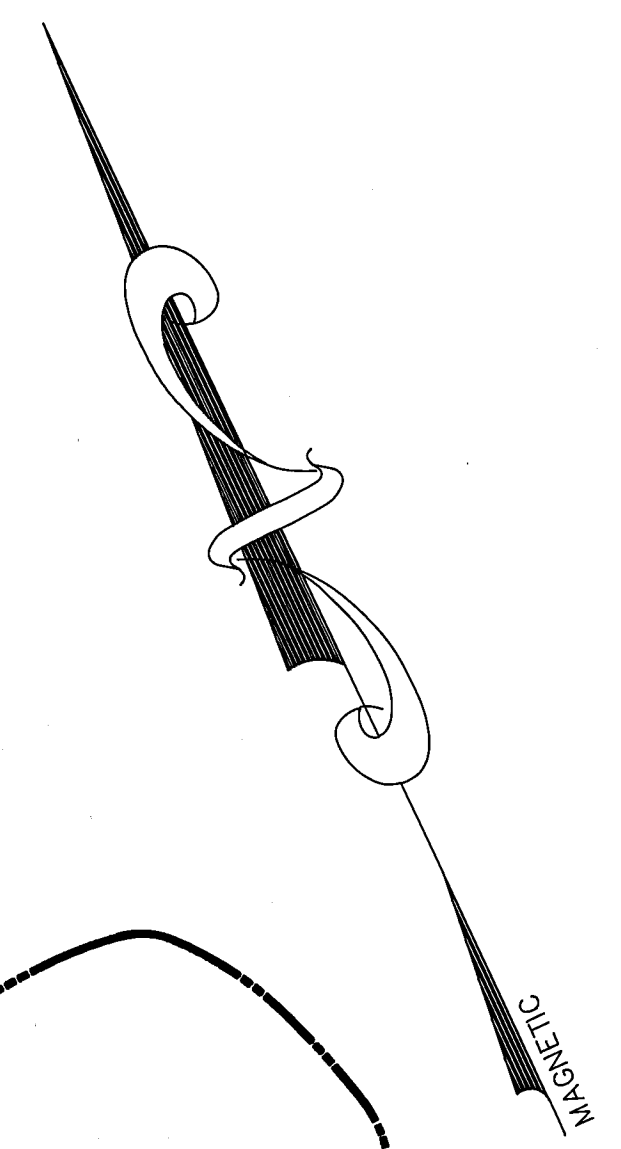
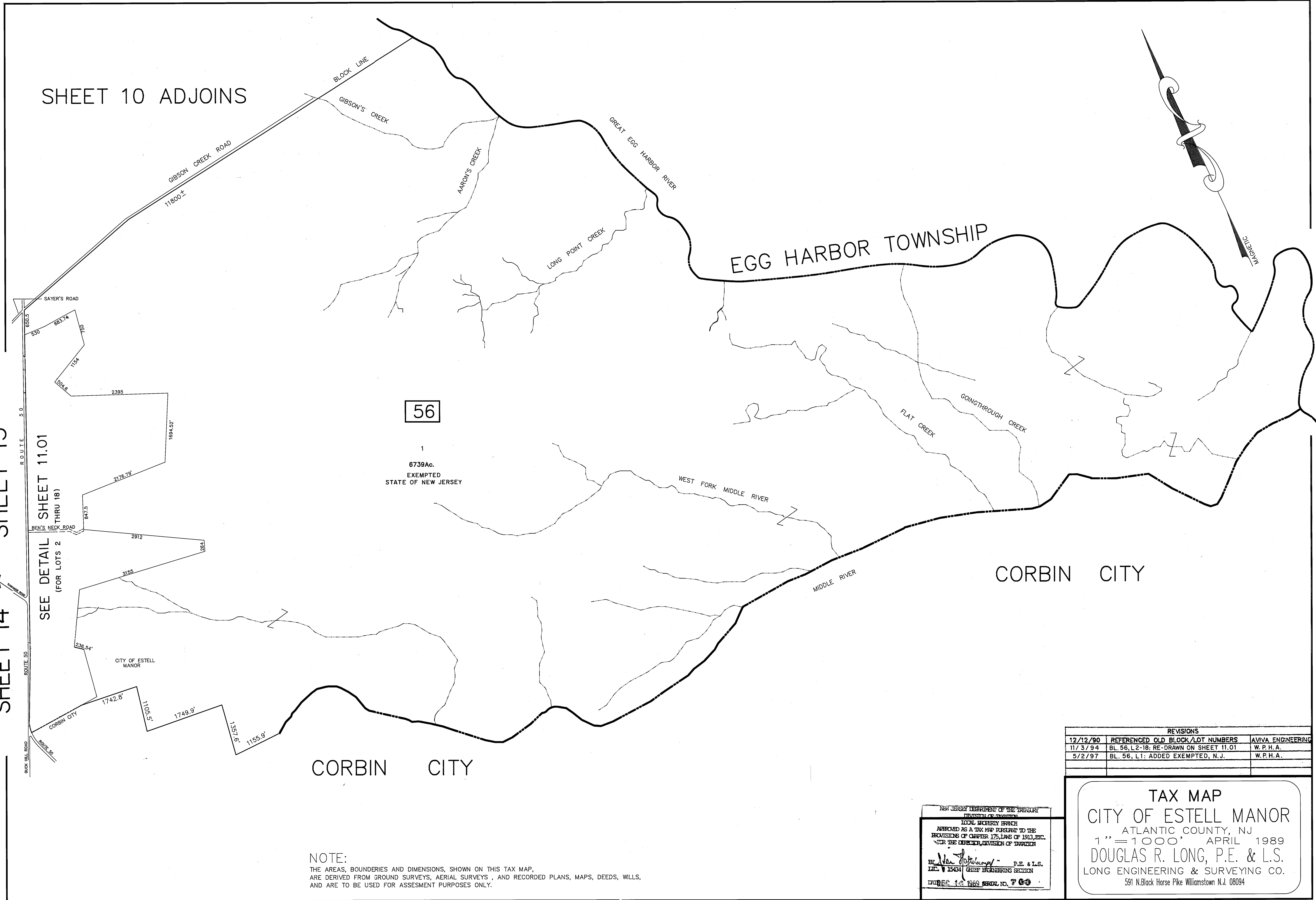


SHEET 10 ADJOINS



SHEET 14 SHEET 13



56

6739Ac. EXEMPTED STATE OF NEW JERSEY

SEE DETAIL SHEET 11.01 (FOR LOTS 2 THRU 18)

NOTE: THE AREAS, BOUNDARIES AND DIMENSIONS, SHOWN ON THIS TAX MAP, ARE DERIVED FROM GROUND SURVEYS, AERIAL SURVEYS, AND RECORDED PLANS, MAPS, DEEDS, WILLS, AND ARE TO BE USED FOR ASSESSMENT PURPOSES ONLY.

CORBIN CITY

CORBIN CITY

REVISIONS		
12/12/90	REFERENCED OLD BLOCK/LOT NUMBERS	AVIVA ENGINEERING
11/3/94	BL. 56, L2-18: RE-DRAWN ON SHEET 11.01	W.P.H.A.
5/2/97	BL. 56, L1: ADDED EXEMPTED, N.J.	W.P.H.A.

NEW JERSEY DEPARTMENT OF THE TREASURY
DIVISION OF TAXATION
LOCAL EXEMPTION BRANCH
APPROVED AS A TAX MAP PURSUANT TO THE
PROVISIONS OF CHAPTER 175, LAWS OF 1913, ETC.
BY THE DIRECTOR, DIVISION OF TAXATION

BY *W. P. H. A.* P.E. & L.S.
L.I.C. # 15434 CHIEF ENGINEERING SECTION
DATE: 12/12/1989 SERIAL NO. 703

TAX MAP
CITY OF ESTELL MANOR
ATLANTIC COUNTY, NJ
1" = 1000' APRIL 1989
DOUGLAS R. LONG, P.E. & L.S.
LONG ENGINEERING & SURVEYING CO.
591 N. Black Horse Pike Williamstown N.J. 08094