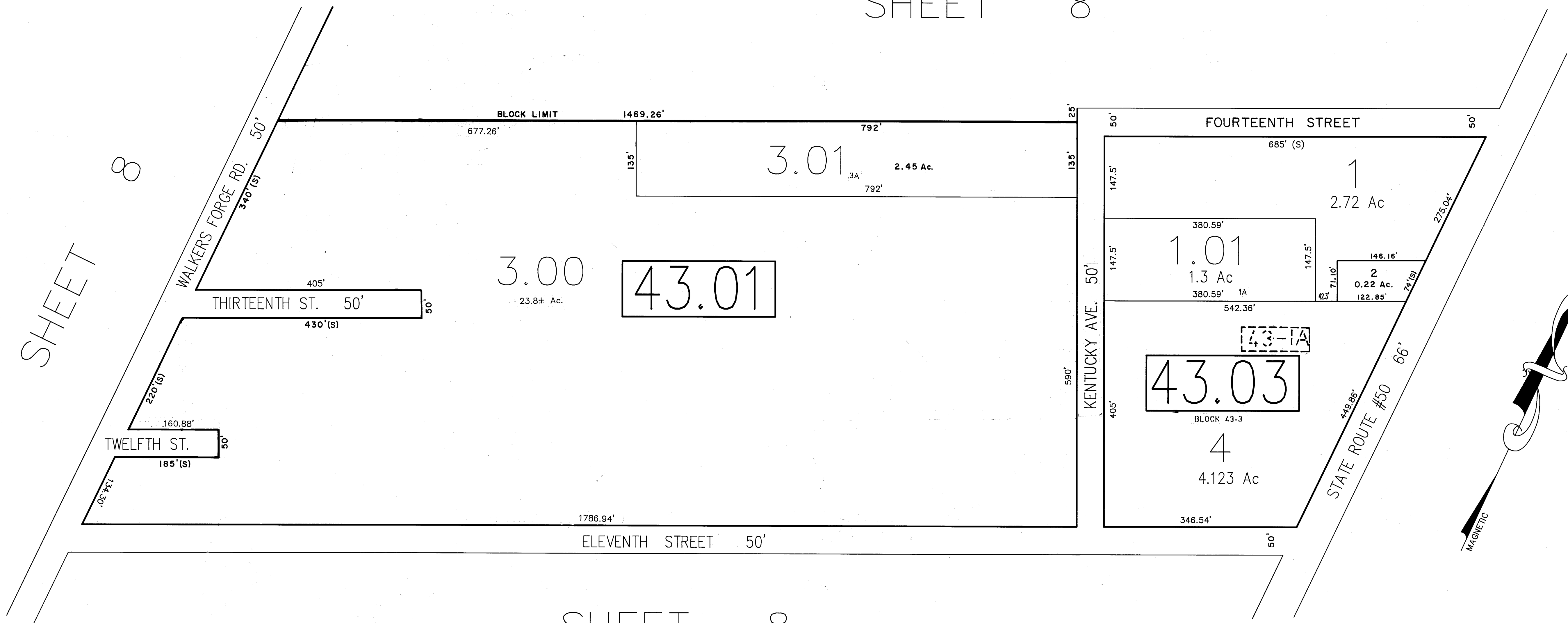


SHEET 8

SHEET 8

SHEET 8



7-18-00	CONSOLIDATED BL. 43.01, LOT 3, 3.02, BL. 43.04, LOT 1 & BL. 43.02, LOT 2	SSCE
REVISIONS		
12-12-90	REFERENCED OLD BLOCK/LOT NUMBERS	AVIVA ENGINEERING
10-31-96	REVISED BLOCK 43.03, LOT 2	W.P.H.A.
2-25-97	VACATED VA., S.C. AVE., 14TH ST. (PART)	W.P.H.A.
2-25-97	REVISED BL. 43.01, L-3.00, 3.01, 3.02	W.P.H.A.

APPROVED FOR THE DIRECTOR, DIVISION OF TAXATION  
 DIVISION OF TAXATION  
 LOCAL RECEIVING OFFICE  
 APPROVED AS A TAX MAP PURSUANT TO THE  
 PROVISIONS OF CHAPTER 175, LAWS OF 1913, ETC.  
 FOR THE DIRECTOR, DIVISION OF TAXATION

*By: [Signature]* P.E. & L.S.  
 L.C. 15434 CHIEF ENGINEERING SECTION  
 DIVISION OF TAXATION, SERIAL NO. 700

**TAX MAP**  
**CITY OF ESTELL MANOR**  
 ATLANTIC COUNTY, NJ  
 SCALE: 1" = 100' APRIL 1989  
**DOUGLAS R. LONG, P.E. & L.S.**  
 LONG ENGINEERING & SURVEYING CO.  
 591 NORTH BLACK HORSE PIKE WILLIAMSTOWN, NJ 08094