

MATCH LINE SHEET 7 ADJOINS

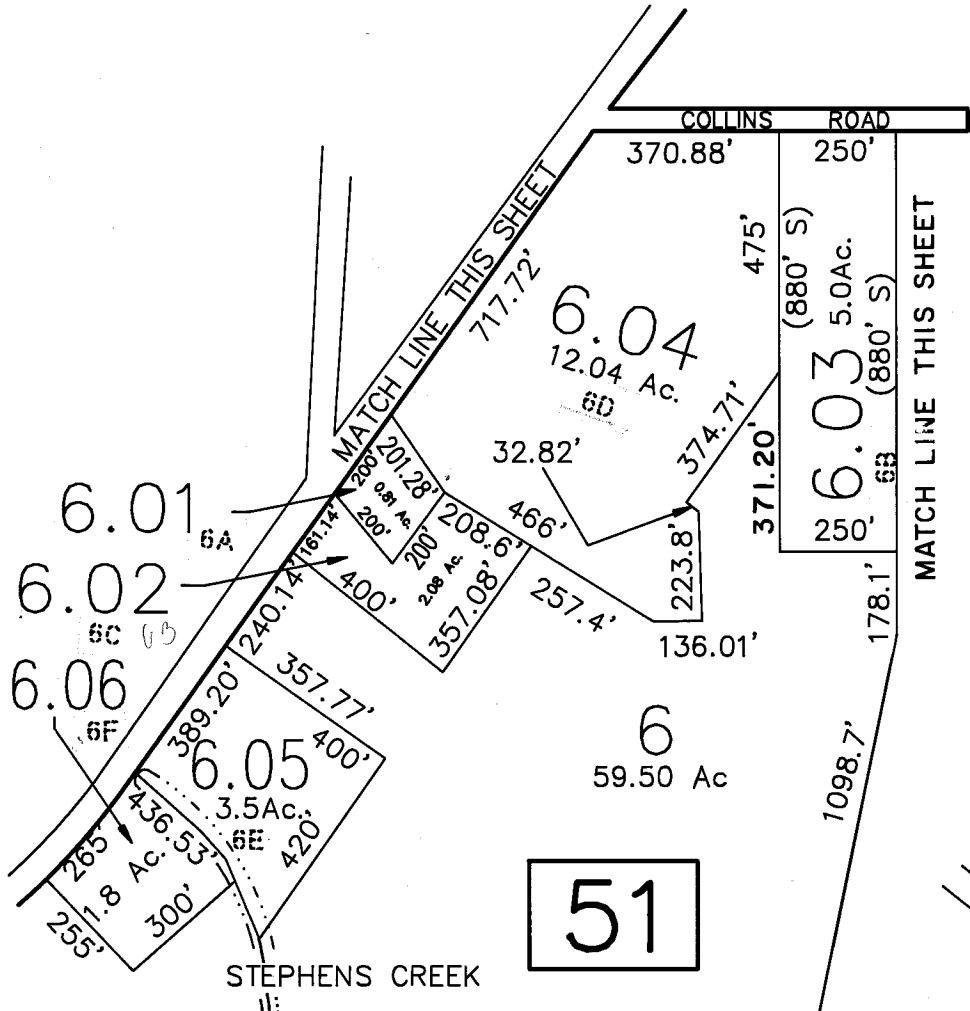
51

5
TOTAL 1672 Ac.
EXEMPTED
COUNTY OF ATLANTIC

SHEET 6

WEYMOUTH
TOWNSHIP

WEYMOUTH
TOWNSHIP



INSET "A"
SCALE: 1" = 400'

SEE INSET "A"

SHEET 9 ADJOINS

7-18-00	REVISED BL. 42, LOT 19	SSCE
9-16-98	BL. 43.05, L 15.02, 15.03 ADD. EXEMPT. D.E.P.	W.P.H.A.
3/31/98	BL. 43.05, L 5: REVISED DIMENSIONS PER DEED	W.P.H.A.
5/2/97	BL. 51, L 5: ADDED: EXEMPTED, COUNTY	W.P.H.A.
REVISIONS		
12/12/90	REFERENCED OLD BLOCK/LOT NUMBERS	AVIVA ENGINEERING
6/8/93	REVISED BLOCK 51, LOTS 5 & 6	W.P.H.A.
4/12/96	ADDED LOT 12 IN BLOCK 43.05	W.P.H.A.
11/1/96	BL. 43: COMBINED LOTS 3, 3.01, 3.02 & 3.03	W.P.H.A.
2-26-97	BL. 43, L-5, 16.89(S) AC. WAS: 16.05 AC.	W.P.H.A.

NEW JERSEY DEPARTMENT OF THE TREASURY
DIVISION OF TAXATION
LOCAL EXEMPTION BRANCH
APPROVED AS A TAX MAP PURSUANT TO THE
PROVISIONS OF CHAPTER 175, LAWS OF 1913, ETC.
FOR THE DIRECTOR, DIVISION OF TAXATION

Douglas R. Long P.E. & L.S.
LIC. # 15434 CHIEF ENGINEERING SECTION

DATE DEC 19 1989 SERIAL NO. 700

TAX MAP
CITY OF ESTELL MANOR
ATLANTIC COUNTY, NJ
SCALE: 1"=400' APRIL 1989
DOUGLAS R. LONG, P.E. & L.S.
LONG ENGINEERING & SURVEYING CO.
591 N. Black Horse Pike Williamstown N.J. 08094