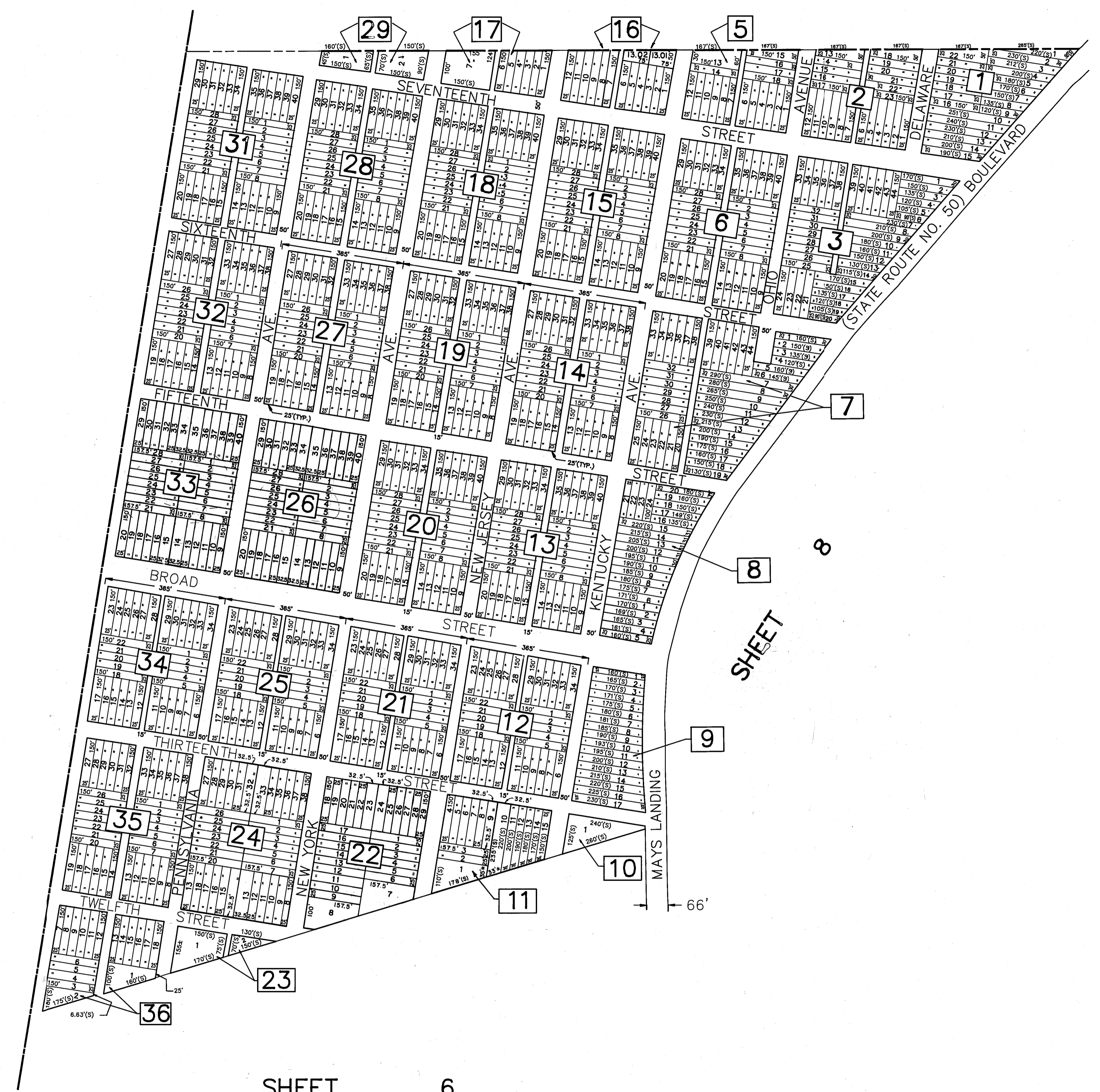


SHEET 6

SHEET 7.02



SHEET 6

NOTE:
 THE AREAS, BOUNDARIES AND DIMENSIONS SHOWN ON THIS TAX MAP
 ARE DERIVED FROM GROUND SURVEYS, AERIAL SURVEYS, AND RECORDED PLANS, MAPS, DEEDS, WILLS,
 AND ARE TO BE USED FOR ASSESSMENT PURPOSES ONLY.

REVISIONS		
7-3-97	BL. 8: LOTS 5,4,3,2,1 WAS: 1,2,3,4,5	W.P.H.A.
12/12/90	REFERENCED OLD BLOCK/LOT NUMBERS	AVIVA ENGINEERING
11/3/92	VACATED CERTAIN 15' PUBLIC ALLEYS	AVIVA ENGINEERING
6/28/93	BLOCK 16, NEW LOTS 13.01 & 13.02	W.P.H.A.
5-24-94	BL.11, 24: VACATED ALLEYS (ORD. NO. 94-5)	W.P.H.A.
8-3-94	BLOCKS 22, 26, 33: VACATED ALLEYS	W.P.H.A.

NEW JERSEY DEPARTMENT OF THE TREASURY
 DIVISION OF TAXATION
 LOCAL EXERCISE BRANCH
 APPROVED AS A TAX MAP PURSUANT TO THE
 PROVISIONS OF CHAPTER 175, LAWS OF 1913, ETC.
 FOR THE DIRECTOR, DIVISION OF TAXATION

Douglas R. Long P.E. & L.S.
 L.I.C. # 15434 CHIEF ENGINEERING SECTION

DATE: 10 1989 SERIAL NO. 7-20

TAX MAP
 CITY OF ESTELL MANOR
 ATLANTIC COUNTY, NJ
 SCALE: 1"=200' APRIL 1989
DOUGLAS R. LONG, P.E. & L.S.
 LONG ENGINEERING & SURVEYING CO.
 591 N. Black Horse Pike Williamstown N.J. 08094