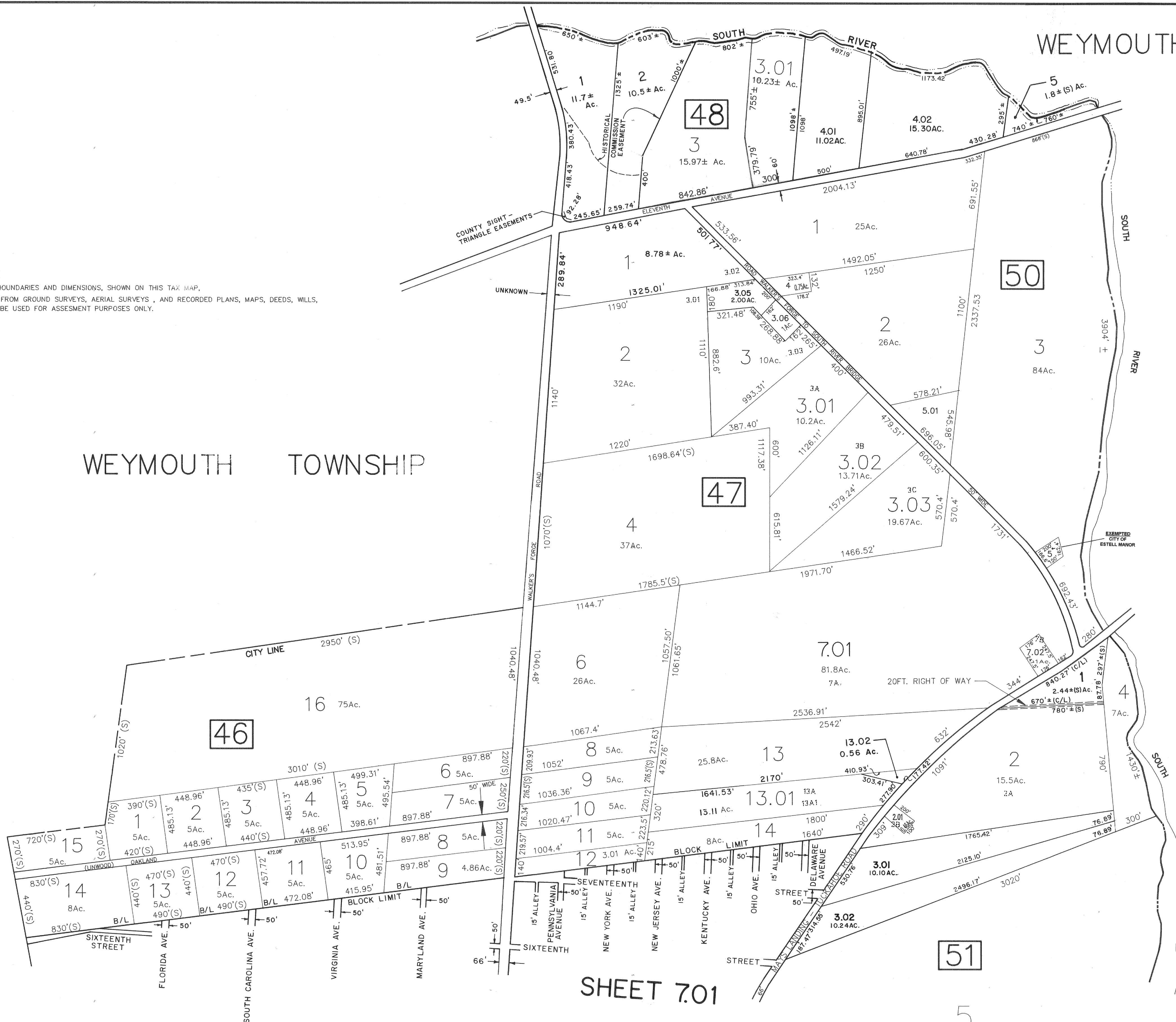


NOTE:

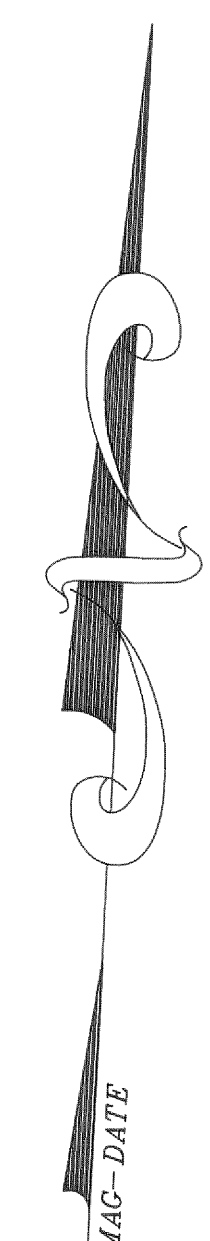
THE AREAS, BOUNDARIES AND DIMENSIONS, SHOWN ON THIS TAX MAP, ARE DERIVED FROM GROUND SURVEYS, AERIAL SURVEYS, AND RECORDED PLANS, MAPS, DEEDS, WILLS, AND ARE TO BE USED FOR ASSESSMENT PURPOSES ONLY.

WEYMOUTH TOWNSHIP



WEYMOUTH TOWNSHIP

WEYMOUTH TOWNSHIP



SHEET 7.02

SHEET 7.01

TOTAL 1672 Ac.

SHEET 8

7-18-00	SUBDIVIDED BL. 48, LOT 3	SSCE
10-3-96	DELETE BK 49, NEW LOTS 1-5 IN BLOCK 48	W. P. H. A.
REVISIONS		
12/12/90	REFERENCED OLD BLOCK/LOT NUMBERS	AVIVA ENGINEERING
2/28/94	VACATE PT. OF ROAD (BLOCKS 48 & 49)	W. P. H. A.
4/20/94	BLOCK 51, LOT 1. REVISED PER DEED.	W. P. H. A.
10/28/94	ADDED STREET ENDS AT BL. 46 & 47	W. P. H. A.
1/29/96	BLOCK 47: LOT 7.01 WAS LOT 7	W. P. H. A.

NEW JERSEY DEPARTMENT OF TREASURY
 DIVISION OF TAXATION
 LOCAL RECEIPTS BRANCH
 RECEIVED AS A TAX MAP FURNISH TO THE
 PROVISIONS OF CHAPTER 175, JUNE OF 1913, ETC.
 SEE THE INSTRUCTIONS DIVISION OF TAXATION

Douglas R. Long P.E. & L.S.
 INC. # 15434 CHIEF ENGINEERING SECTION

APR 19 1989 SERIAL NO. 700

TAX MAP
CITY OF ESTELL MANOR
 ATLANTIC COUNTY, NJ
 SCALE 1"=400' APRIL 1989
DOUGLAS R. LONG, P.E. & L.S.
 LONG ENGINEERING & SURVEYING CO.
 591 N. Black Horse Pike Williamstown N.J. 08094