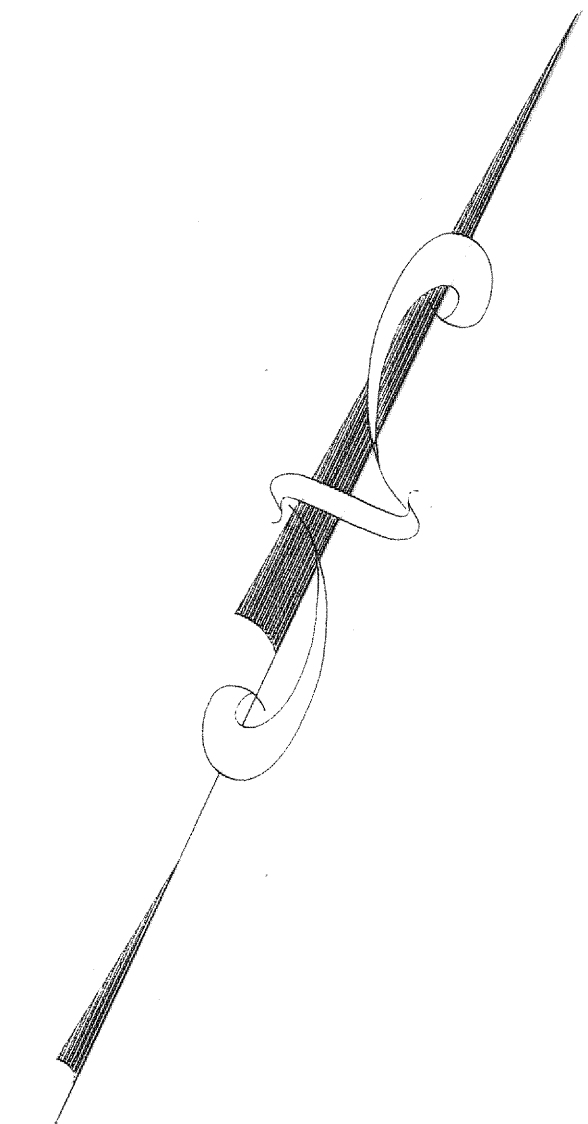
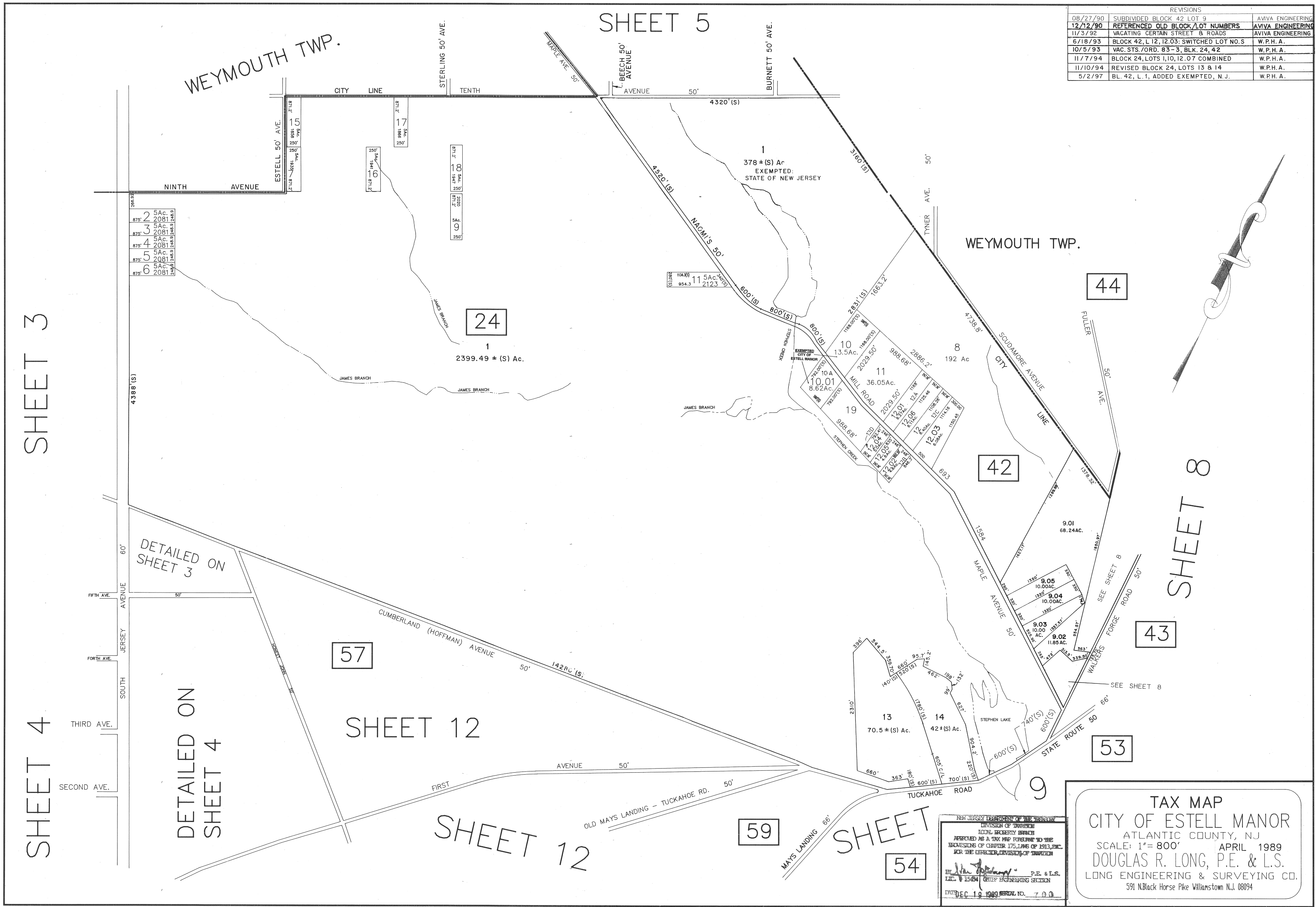


REVISIONS		
08/27/90	SUBDIVIDED BLOCK 42 LOT 9	AVIVA ENGINEERING
12/12/90	REFERENCED OLD BLOCK/LOT NUMBERS	AVIVA ENGINEERING
11/3/92	VACATING CERTAIN STREET & ROADS	AVIVA ENGINEERING
6/18/93	BLOCK 42, L. 12, 12.03; SWITCHED LOT NO. 5	W.P.H.A.
10/5/93	VAC. STS./ORD. 83-3, BLK. 24, 42	W.P.H.A.
11/7/94	BLOCK 24, LOTS 1, 10, 12, 07 COMBINED	W.P.H.A.
11/10/94	REVISED BLOCK 24, LOTS 13 & 14	W.P.H.A.
5/2/97	BL. 42, L. 1, ADDED EXEMPTED, N.J.	W.P.H.A.



TAX MAP
CITY OF ESTELL MANOR
 ATLANTIC COUNTY, NJ
 SCALE: 1" = 800' APRIL 1989
DOUGLAS R. LONG, P.E. & L.S.
 LONG ENGINEERING & SURVEYING CO.
 591 N. Black Horse Pike Williamstown, N.J. 08094

NEW JERSEY DEPARTMENT OF TREASURY
 DIVISION OF TAXATION
 LOCAL PROPERTY TAXES
 APPROVED AS A TAX MAP PURSUANT TO THE
 PROVISIONS OF CHAPTER 175, L.A.S. OF 1913, ETC.
 FOR THE CUMBERLAND DIVISION OF TAXATION
 P.E. & L.S.
 DEC 19 1989 SERIAL NO. 700