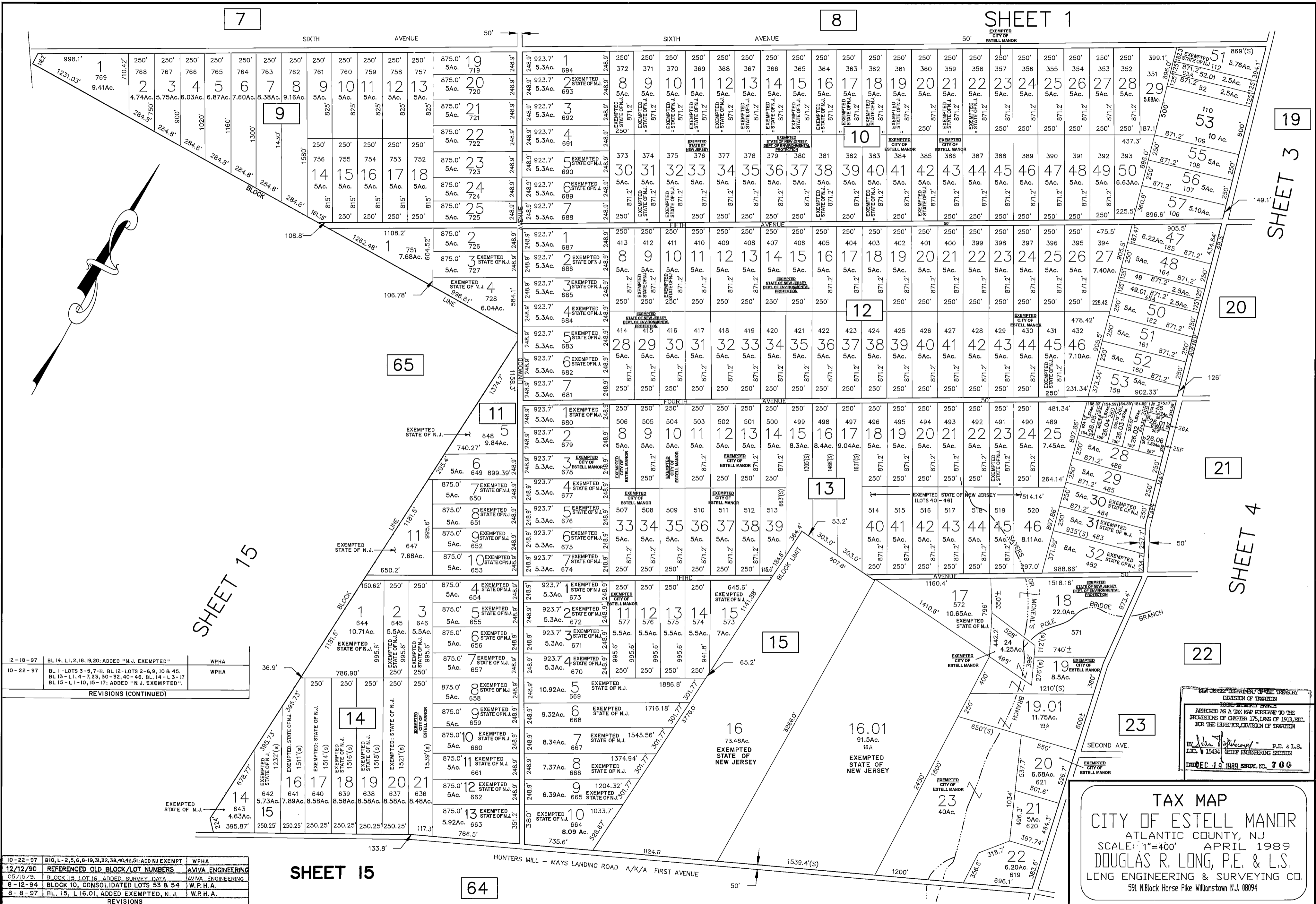


SHEET 1



12-18-97	BL 14, L1, 2, 18, 19, 20; ADDED "N.J. EXEMPTED"	WPHA
10-22-97	BL 11 - LOTS 3-5, 7-11; BL 12 - LOTS 2-6, 9, 10 & 45; BL 13 - L1, 4-7, 23, 30-32, 40-46; BL 14 - L3-17; BL 15 - L1-10, 15-17; ADDED "N.J. EXEMPTED"	WPHA

REVISIONS (CONTINUED)

10-22-97	B10, L-2, 5, 6, 8-19, 31, 32, 38, 40, 42, 51; ADD NJ EXEMPT	WPHA
12/12/90	REFERENCED OLD BLOCK/LOT NUMBERS	AVIVA ENGINEERING
03/15/91	BLOCK 15 LOT 16 ADDED SURVEY DATA	AVIVA ENGINEERING
8-12-94	BLOCK 10, CONSOLIDATED LOTS 53 & 54	W.P.H.A.
8-8-97	BL. 15, L 16.01, ADDED EXEMPTED, N.J.	W.P.H.A.

SHEET 15

64

NEW JERSEY DEPARTMENT OF THE TREASURY  
DIVISION OF REVENUE  
1000 BOULEVARD AVENUE  
TREASURY BUILDING  
APPROVED AS A TAX MAP PURSUANT TO THE  
PROVISIONS OF CHAPTER 175, LAWS OF 1913, ETC.  
FOR THE DIRECTOR, DIVISION OF TAXATION

*By: [Signature]* P.E. & L.S.  
L.I.C. # 15434 CHIEF ENGINEERING SECTION

DEC 10 1989 SERIAL NO. 700

**TAX MAP**  
CITY OF ESTELL MANOR  
ATLANTIC COUNTY, NJ  
SCALE: 1"=400' APRIL 1989  
DOUGLAS R. LONG, P.E. & L.S.  
LONG ENGINEERING & SURVEYING CO.  
591 N.Black Horse Pike Williston NJ, 08094